

TYPE:

ORDERING CODE:

APPROVAL:

JOB:

DATE:

SPECIFICATIONS

Primary Material: Aluminum extrusion

Beam Spread: 60° until entering Panel, Internally reflected

Fiber type: 0.75mm PMMA Fiber

Fiber Tail: 10', 20' or 30', Custom lengths available

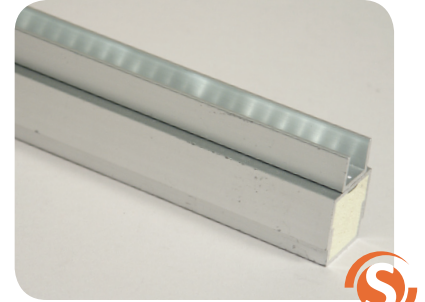
Finishes: Clear or black anodized

Max Exp Rating: Indoor or outdoor use, Please specify with order

Linking: Soft links available for longer lengths and sharp corners

Panel: Panel must be monolithic, acrylic, or high-clarity glass (not laminated, float glass, etc) and surface etched no more than 25%. Light penetration is generally 12"–24"

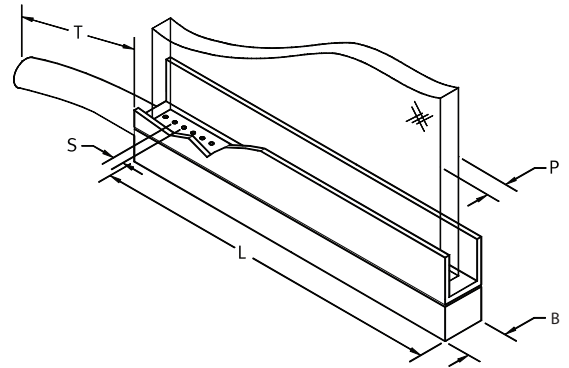
Mounting : Use LB-MB Mounting bracket. LightFrame is not weight bearing; it should not support panel. Adhere to panel with clear silicone



Evenly illuminates etched and deep carved transparent panels by providing a receiving channel to align fibers.

Isometric Key:

- B Base size
- L Lit Length (see table)
- S Fiber Spacing (0.25", 0.5", & 1")
- T Tail Length
- P Panel thickness



Panel	S 1/4" (0.250")	M 3/8" (0.375")	L 1/2" (0.500")	X 3/4" (0.750")
Receiving Channel	0.27"	0.39"	0.52"	0.77"
Compact Base				Not Applicable
Standard Base	Not Applicable			